



India Meteorological Department  
(Ministry of Earth Sciences)

BULLETIN NO.: 14 (ARB/01/2021)

TIME OF ISSUE: 0500 HOURS IST

DATED: 16.05.2021

FROM: INDIA METEOROLOGICAL DEPARTMENT (FAX NO. 24643965/24699216/24623220)

TO: CONTROL ROOM, NDM, MINISTRY OF HOME AFFAIRS (FAX.NO. 23092398/23093750)

CONTROL ROOM NDMA (FAX.NO. 26701729)

CABINET SECRETARIAT (FAX.NO.23012284, 23018638)

PS TO HON'BLE MINISTER FOR S & T AND EARTH SCIENCES (FAX NO.23316745)

SECRETARY, MOES (FAX NO. 24629777)

H.Q. (INTEGRATED DEFENCE STAFF AND CDS) (FAX NO. 23005137/23005147)

DIRECTOR GENERAL, DOORDARSHAN (23385843) DIRECTOR GENERAL, AIR (23421101, 23421105, 23421219)

PIB MOES (FAX NO. 23389042)

UNI (FAX NO. 23355841)

D.G. NATIONAL DISASTER RESPONSE FORCE (NDRF) (FAX NO. 26105912, 2436 3260)

DIRECTOR, PUNCTUALITY, INDIAN RAILWAYS (FAX NO. 23388503)

CHIEF SECRETARY, KERALA (FAX NO. 0471-2327176)

ADMINISTRATOR, LAKSHADWEEP ISLANDS (FAX NO. 0413-262184)

CHIEF SECRETARY, KARNATAKA (FAX NO. 080-22258913)

CHIEF SECRETARY, GOA (FAX NO. 0832-2415201)

CHIEF SECRETARY, MAHARASHTRA (FAX NO. 022- 22028594)

CHIEF SECRETARY, GUJARAT (FAX NO. 079-23250305)

CHIEF SECRETARY, DAMAN & DIU (FAX NO. 0260-2230775)

CHIEF SECRETARY, DADRA & NAGAR HAVELI (FAX NO. 0260-2645466)

CHIEF SECRETARY, TAMIL (FAX NO. 044-25672304)

**Sub: Severe Cyclonic Storm "Tauktae" (pronounced as Tau'Te) intensified into Very Severe Cyclonic Storm over Eastcentral Arabian Sea: Cyclone Alert for Gujarat & Diu coasts (Yellow message)**

The **Severe Cyclonic Storm "Tauktae" (pronounced as Tau'Te)** over eastcentral Arabian Sea moved nearly northwards with a speed of about 09 kmph during past 06 hours, intensified into a Very Severe Cyclonic Storm and lay centred at 0230 hours IST of today, the 16<sup>th</sup> May, 2021 over eastcentral Arabian Sea near latitude 14.7°N and longitude 72.7°E, about 150 km southwest of Panjim-Goa, 490 km south of Mumbai, 730 km south-southeast of Veraval (Gujarat) and 870 km south-southeast of Karachi (Pakistan).

It is very likely to intensify further during next 12 hours. It is very likely to move north-northwestwards and reach Gujarat coast in the evening hours of 17<sup>th</sup> & cross Gujarat coast between Porbandar & Mahuva (Bhavnagar district) around 18<sup>th</sup> May early morning.

Forecast track and intensity are given in the following table:

Date/Time(IST)	Position (Lat. °N/ long. °E)	Maximum sustained surface wind speed (Kmph)	Category of cyclonic disturbance
16.05.21/0230	14.7/72.7	120-130 gusting to 145	Very Severe Cyclonic Storm
16.05.21/0530	15.0/72.7	120-130 gusting to 145	Very Severe Cyclonic Storm
16.05.21/1130	15.8/72.4	130-140 gusting to 155	Very Severe Cyclonic Storm
16.05.21/1730	16.5/72.0	140-150 gusting to 165	Very Severe Cyclonic Storm
16.05.21/2330	17.3/71.5	145-155 gusting to 170	Very Severe Cyclonic Storm
17.05.21/1130	18.9/70.8	150-160 gusting to 175	Very Severe Cyclonic Storm
17.05.21/2330	20.2/70.5	150-160 gusting to 175	Very Severe Cyclonic Storm
18.05.21/1130	21.7/70.6	90-100 gusting to 110	Severe Cyclonic Storm
18.05.21/2330	23.4/71.3	50-60 gusting to 70	Deep Depression
19.05.21/1130	25.1/72.0	30-40 gusting to 50	Depression

**Spatial rainfall distribution: Isolated: <25%, A few: 26-50%, Many: 51-75%, Most: 76-100%**

**Rainfall amount (mm): Heavy rain: 64.5 – 115.5, Very heavy rain: 115.6 – 204.4, Extremely heavy rain: 204.5 or more.**

## Warnings:

### (i) Rainfall:

- **Kerala:** Light to moderate rainfall at many places with heavy to very heavy falls at isolated places on 16<sup>th</sup> and heavy falls at isolated places on 17<sup>th</sup> May.
- **Karnataka (coastal & adjoining Ghat districts):** Light to moderate rainfall at most places with heavy to very heavy falls at isolated places on 16<sup>th</sup>.
- **Konkan & Goa:** Light to moderate rainfall at most places with heavy to very heavy falls at a few places over Konkan & Goa & adjoining Ghat areas on 16<sup>th</sup> and heavy falls at isolated places on 17<sup>th</sup> May over north Konkan.
- **Gujarat:** Light to moderate rainfall at many places very likely to commence over coastal districts of Saurashtra from 16<sup>th</sup> May afternoon, with heavy to very heavy falls at isolated places over Saurashtra & Kutch and Diu and extremely heavy falls at isolated places on 17<sup>th</sup> and with heavy to very heavy falls at a few places over Saurashtra & Kutch and Diu with extremely heavy falls ( $\geq 20$  cm) at isolated places on 18<sup>th</sup>.
- **Rajasthan:** Light to moderate rainfall at many places with heavy to very heavy falls at isolated places very likely over south Rajasthan on 18<sup>th</sup> & over Rajasthan on 19<sup>th</sup> May.

### (ii) Wind warning

- Gale wind speed reaching 120–130 kmph gusting to 145 kmph is prevailing over eastcentral Arabian Sea. It is likely to increase over eastcentral Arabian Sea becoming 120-130 kmph gusting to 145 kmph from 16<sup>th</sup> May morning.
- Gale winds speed reaching 60-70 kmph gusting to 80 kmph along & off Maharashtra –Goa coasts on 16<sup>th</sup> & 17<sup>th</sup> May.
- Squally wind speed reaching 40-50 kmph gusting to 60 kmph likely over northeast Arabian Sea and along & off south Gujarat & Daman and Diu coasts on 17<sup>th</sup> morning and gradually increase becoming Gale winds speed reaching 150-160 kmph gusting to 175 kmph over northeast Arabian Sea and along & off Saurashtra & Kutch coasts (Porbandar, Junagarh, Gir Somnath, Amreli) and 120 -150 kmph gusting to 165 kmph over Devbhoomi Dwarka, Jamnagar, Bhavnagar districts of Gujarat from early hours of 18<sup>th</sup>.

### (iii) Sea condition

- Sea condition over eastcentral Arabian Sea will be very high to Phenomenal on 16<sup>th</sup> May and over northeast Arabian Sea on 17<sup>th</sup> & 18<sup>th</sup> May.
- Sea conditions will be very rough to High along & off Maharashtra–Goa coasts on 16<sup>th</sup> May. It is very likely to be very rough to High along & off south Gujarat coast from 17<sup>th</sup> May morning and very high to Phenomenal from 17<sup>th</sup> midnight.

### (iv) Storm surge warning

Tidal wave of about 1-2 m above astronomical tide is likely to inundate coastal areas of Morbi, Kutch, Devbhoomi Dwarka & Jamnagar districts and 1-2 meters along Porbandar, Junagarh, Diu, Gir Somnath, Amreli, Bhavnagar and about 1m over the remaining coastal districts of Gujarat during the time of landfall.

### (v) Fishermen Warning

- Total suspension of fishing operations over eastcentral Arabian Sea and along & off Karnataka-Goa–Maharashtra coasts.

**Spatial rainfall distribution: Isolated: <25%, A few: 26-50%, Many: 51-75%, Most: 76-100%**  
**Rainfall amount (mm): Heavy rain: 64.5 – 115.5, Very heavy rain: 115.6 – 204.4, Extremely heavy rain: 204.5 or more.**

- Total suspension of fishing operations over northeast Arabian Sea and along & off Gujarat coast from 17<sup>th</sup> May.
- The fishermen are advised not to venture into eastcentral Arabian Sea along & off Karnataka coast, eastcentral Arabian Sea and along & off Maharashtra – Goa coasts and into eastcentral & adjoining northeast Arabian Sea along & off Gujarat coast till 18<sup>th</sup> May.
- Those who are out at Sea over north Arabian Sea are advised to return to the coast.

**(vi) (A) Damage Expected over Kutch, Porbandar, Junagarh, Gir Somnath, Amreli, Jamnagar & Bhavnagar districts of Gujarat:**

- Total destruction of thatched houses/ extensive damage to kutcha houses. Some damage to pucca houses. Potential threat from flying objects.
- Bending/ uprooting of power and communication poles.
- Major damage to Kutcha and Pucca roads. Flooding of escape routes. Minor disruption of railways, overhead power lines and signaling systems.
- Widespread damage to salt pans & standing crops,. Blowing down of bushy trees.
- Small boats, country crafts may get detached from moorings.
- Visibility severely affected.

**(vi) (B) Damage Expected over Devbhoomi Dwarka, Rajkot, Botad & Morbi districts of Gujarat:**

- Major damage to thatched houses/ huts. Roof tops may blow off. Unattached metal sheets may fly.
- Minor damage to power and communication lines.
- Major damage to Kutcha and some damage to Pucca roads. Flooding of escape routes.
- Breaking of tree branches, uprooting of large avenue trees. Moderate damage to banana and papaya trees. Large dead limbs blown from trees.
- Major damage to coastal crops.
- Damage to embankments/ salt pans.

**(vii) Action Suggested:**

- Total suspension of fishing operations.
- Judicious regulation of rail and road traffic.
- People in affected areas to remain indoors.
- Movement in motor boats and small ships unsafe.

The next bulletin will be issued at 0830 hrs IST of today, the 16th May, 2021.

**(DR Pattanaik)**  
**Scientist-F, RSMC, New Delhi**

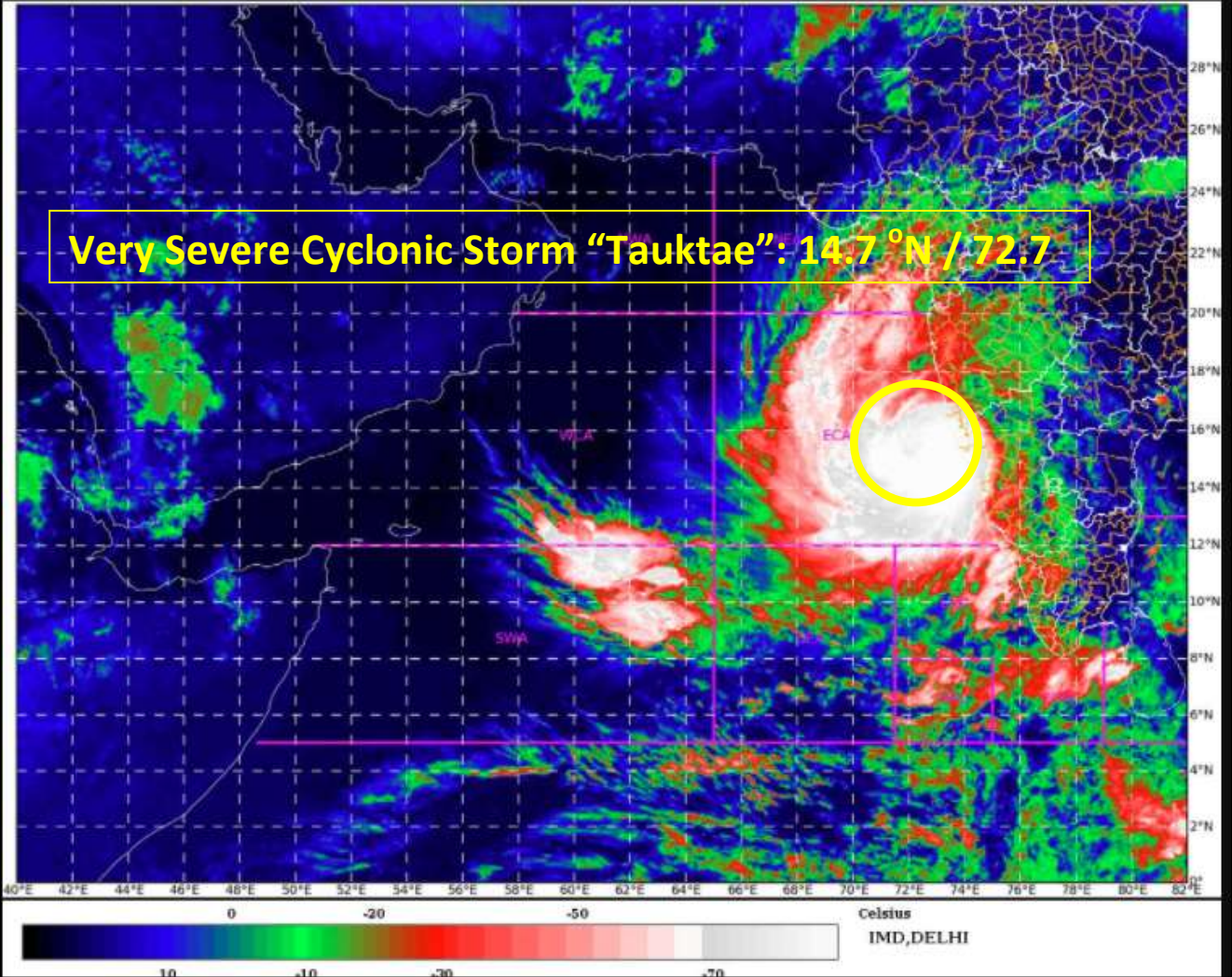
Copy to: ACWC Chennai/ ACWC Mumbai/ MC Goa/ MC Bengaluru/ CWC Ahmedabad/ Thiruvananthapuram.

SAT : INSAT-3D IMG  
IMG\_TIR1\_TEMP 10.8 um  
ARABIAN\_SEA

15-05-2021/(2230 to 2256) GMT  
16-05-2021/(0400 to 0426) IST



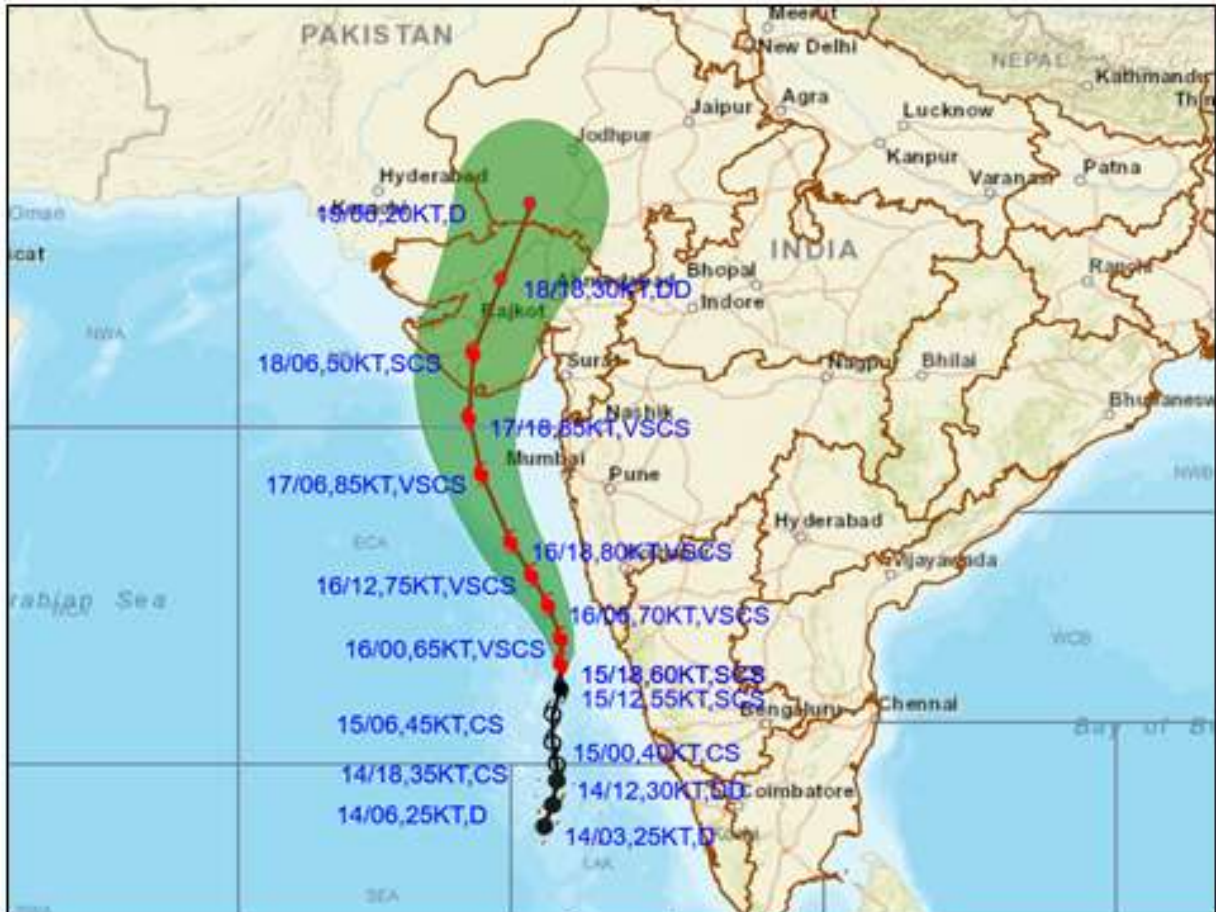
**Very Severe Cyclonic Storm "Tauktae": 14.7 °N / 72.7**



**Spatial rainfall distribution: Isolated: <25%, A few: 26-50%, Many: 51-75%, Most: 76-100%**  
**Rainfall amount (mm): Heavy rain: 64.5 – 115.5, Very heavy rain: 115.6 – 204.4, Extremely heavy rain: 204.5 or more.**



**OBSERVED AND FORECAST TRACK ALONGWITH CONE OF UNCERTAINTY OF SEVERE CYCLONIC STORM "TAUKTAE" OVER EASTCENTRAL ARABIAN SEA BASED ON 1800 UTC OF 15<sup>TH</sup> MAY, 2021**



DATE/TIME IN UTC  
 IST=UTC + 0530  
 L: LOW PRESSURE AREA  
 WML: WELL MARKED LOW PRESSURE AREA  
 D: DEPRESSION (17-27 KT)  
 DD: DEEP DEPRESSION (28-33 KT)  
 CS: CYCLONIC STORM (34-47 KT)  
 SCS: SEVERE CYCLONIC STORM (48-63KT)  
 VSCS: VERY SEVERE CYCLONIC STORM (64-89 KT)  
 ESCS: EXTREMELY SEVERE CYCLONIC STORM (90-119 KT)  
 SuCS: SUPER CYCLONIC STORM (≥20 KT)

● LESS THAN 34 KT  
 ○ 34.47 KT  
 ● ≥ 48 KT  
 — OBSERVED TRACK  
 — FORECAST TRACK  
 — CONE OF UNCERTAINTY  
 AREA OF MAXIMUM SUSTAINED WIND SPEED:  
 — 28-33 KT (52-61 KMPH)  
 — 34-49 KT (62-91 KMPH)  
 — 50-63 KT (92-117 KMPH)  
 — ≥ 64 KT (≥118 KMPH)

**IMPACT OVER THE SEA**

MSW (knot/kmph)	Impact	Action
28-33 (52-61)	Very rough seas	Total suspension of fishing operations
34-49 (62-91)	High to very high seas	Total suspension of fishing operations
50-63 (92-117)	Very high seas	Total suspension of fishing operations
≥ 64 (≥118)	Phenomenal	Total suspension of fishing operations

Spatial rainfall distribution: Isolated: <25%, A few: 26-50%, Many: 51-75%, Most: 76-100%  
 Rainfall amount (mm): Heavy rain: 64.5 – 115.5, Very heavy rain: 115.6 – 204.4, Extremely heavy rain: 204.5 or more.



**OBSERVED AND FORECAST TRACK ALONGWITH CONE OF UNCERTAINTY OF SEVERE CYCLONIC STORM "TAUKTAE" OVER EASTCENTRAL ARABIAN SEA BASED ON 1800 UTC OF 15<sup>TH</sup> MAY, 2021**



DATE/TIME IN UTC  
 IST=UTC + 0530  
 L: LOW PRESSURE AREA  
 WML: WELL MARKED LOW PRESSURE AREA  
 D: DEPRESSION (17-27 KT)  
 DD: DEEP DEPRESSION (28-33 KT)  
 CS: CYCLONIC STORM (34-47 KT)  
 SCS: SEVERE CYCLONIC STORM (48-63KT)  
 VSCS: VERY SEVERE CYCLONIC STORM (64-89 KT)  
 ESCS: EXTREMELY SEVERE CYCLONIC STORM (90-119 KT)  
 SuCS: SUPER CYCLONIC STORM (≥20 KT)

● LESS THAN 34 KT  
 ○ 34-47 KT  
 ● ≥ 48 KT  
 — OBSERVED TRACK  
 — FORECAST TRACK  
 — CONE OF UNCERTAINTY  
 AREA OF MAXIMUM SUSTAINED WIND SPEED:  
 28-33 KT (52-61 KMPH)  
 34-49 KT (62-91 KMPH)  
 50-63 KT (92-117 KMPH)  
 ≥ 64 KT (≥118 KMPH)

**IMPACT OVER THE SEA**

MSW (knot/kmph)	Impact	Action
28-33 (52-61)	Very rough seas	Total suspension of fishing operations
34-49 (62-91)	High to very high seas	Total suspension of fishing operations
50-63 (92-117)	Very high seas	Total suspension of fishing operations
≥ 64 (≥118)	Phenomenal	Total suspension of fishing operations

Spatial rainfall distribution: Isolated: <25%, A few: 26-50%, Many: 51-75%, Most: 76-100%  
 Rainfall amount (mm): Heavy rain: 64.5 – 115.5, Very heavy rain: 115.6 – 204.4, Extremely heavy rain: 204.5 or more.